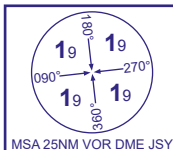


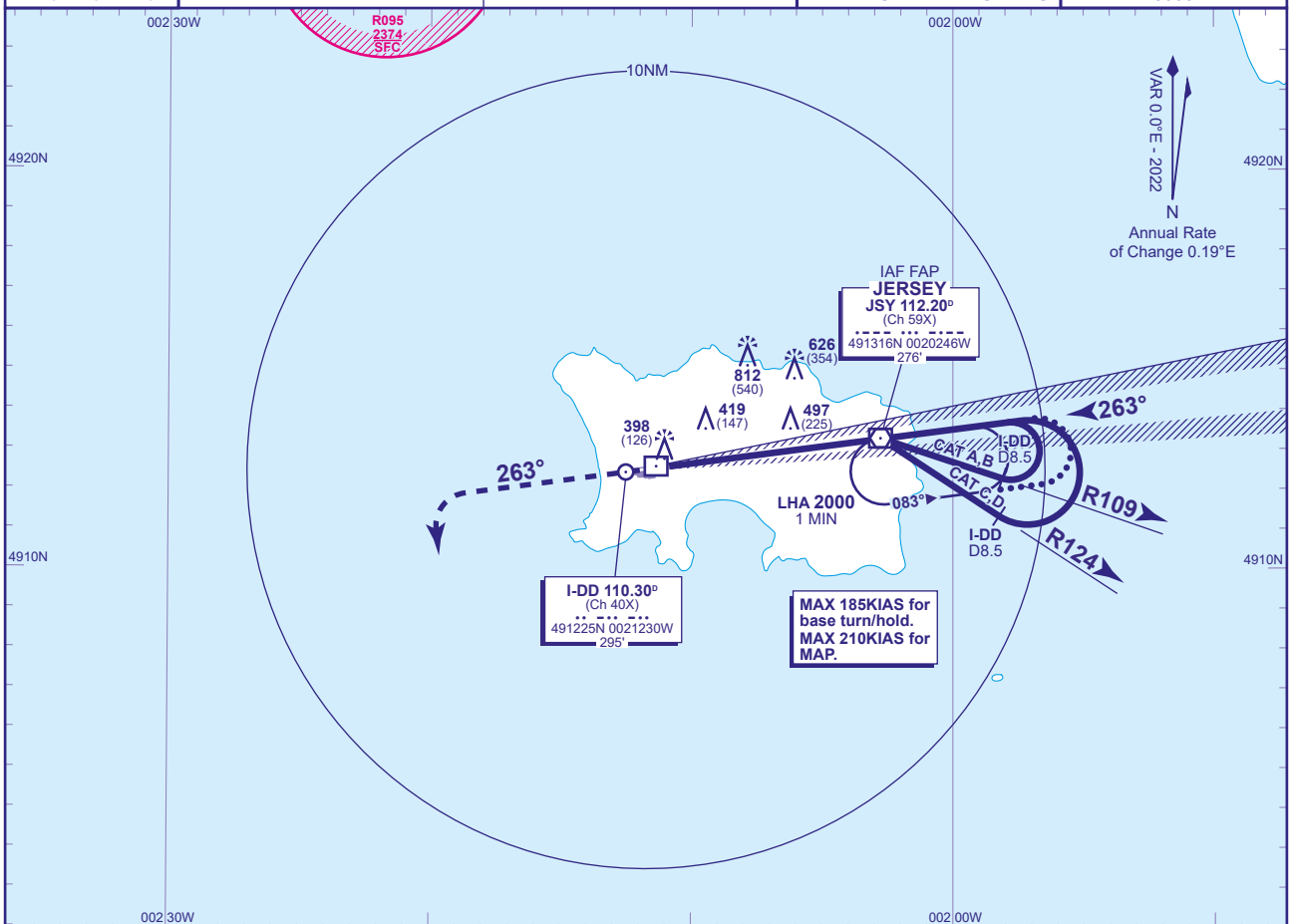
## INSTRUMENT APPROACH CHART - ICAO

JERSEY  
ILS/DME/VOR  
RWY 26  
(ACFT CAT A,B,C,D)

ATC	125.205, 120.450	JERSEY CONTROL
APP	120.305, 118.555	JERSEY APPROACH
TWR	119.455	JERSEY TOWER
	121.905	JERSEY GROUND
ATIS	134.680	JERSEY INFORMATION

AD ELEVATION	277
THR ELEVATION	272
OBSTACLE ELEVATION	812 AMSL (540) (ABOVE THR)
BEARINGS ARE MAGNETIC	

TRANSITION ALTITUDE	5000
---------------------	------



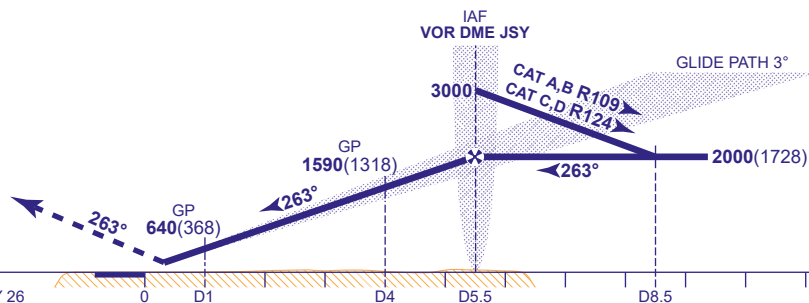
## RECOMMENDED PROFILE GLIDE PATH 3°, 316FT/NM

DME I-DD	5	4	3	2	1
ALT(HGT)	1910(1638)	1590(1318)	1270(998)	960(688)	640(368)

RDH 52

Climb straight ahead to **3000**, then turn left heading **180°M**, then as directed by ATC.

RCF: Proceed as above, and continue on heading **180°M**, 2 minutes after initiating missed approach, turn left direct to **VOR JSY** to join the hold at **3000**.



DME I-DD zero ranged to THR RWY 26

Aircraft Category		A	B	C	D	Rate of descent	G/S KT	160	140	120	100	80
OCA (OCH)	CAT I	439(167)	446(174)	458(186)	468(196)		FT/MIN	840	740	630	530	420
VM(C)OCA (OCH AAL)	Total Area	770(493)	770(493)	1210(933)	1210(933)							
	South of RWY 08/26	770(493)	770(493)	1030(753)	1030(753)							

## ALTERNATIVE PROCEDURE EXTENDED HOLDING PATTERN (MAX 185KIAS)

Arrive at IAF VOR JSY at **3000**. Extend the outbound leg of the holding pattern descending to **2000**(1728). At I-DD D9.5 turn left onto the LOC, when established, continue as for main procedure.

## AIRCRAFT UNABLE TO RECEIVE DME I-DD

MAIN PROCEDURE: Advise ATC. Radar ranges will be passed equivalent to D8.5 outbound and D4 inbound.

ALTERNATIVE PROCEDURE: Advise ATC. Radar ranges will be passed equivalent to D9.5 outbound and D4 inbound.

**NOTE 1** Full scale fly-up indication left of C/L may not be maintained prior to joining the glide path from below.

**2** Localiser fluctuations may be experienced. See EGJJ AD 2.20 Local Traffic Regulations 6(d).

CHANGE (5/25): OCA (OCH) CAT I MINIMA REVISED.